

Wireless Outdoor Siren/Strobe (BX-7)

1 Mounting Holes x 4

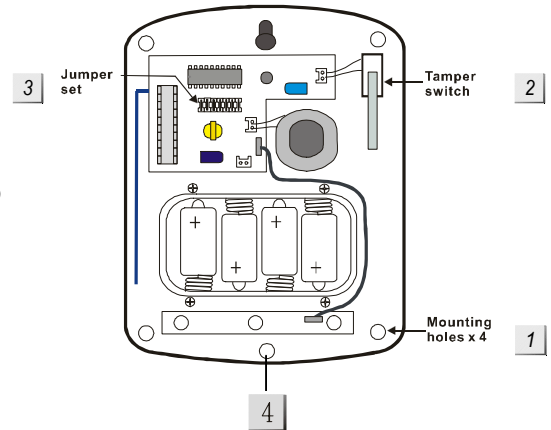
2 Tamper Switch

3 Function Jumper Set

Contains 7 jumpers to enable the learning mode and to set the alarm period of siren and strobe light.

4 Securing Screw

To secure the case from being open.



Accessories included

In addition to the BX-7 itself, the following accessories are also included in the package:

- a. 4 x large wall plugs.
- b. 4 x 4mm x 30mm cross head fixing screws.
- c. 4 x 1.5V D alkaline batteries.

Jumper Position Table

Remove the cover by unscrewing the single screw located at the bottom. In the middle of the “L-shaped” PCB board, you can see a jumper set which consists of 7 jumpers. The function of each jumper is listed in the table below.

| | | |
|---------|---------|-----------------------|
| JP1 | | Siren Learning |
| Linked | | Normal operation |
| Removed | | Learn-in mode |
| JP2 | | Strobe Activation |
| Linked | | On for alarm period |
| Removed | | On until reset |
| JP3 | JP4 | Siren Duration |
| Linked | Linked | 3 min. |
| Removed | Linked | 5 min. |
| Linked | Removed | 10 min. |
| Removed | Removed | 1 second (test) |
| JP5 | | Siren Mode |
| Linked | | Stand-alone operation |
| Removed | | Slave operation |
| JP6 | | Memory Reset |
| Linked | | Normal |
| Removed | | Clear Memory |
| JP7 | | Jamming Detection |
| Linked | | Jamming Detection Off |
| Removed | | Jamming Detection On |

The jumpers are either On or Off. On is when the jumper connects two pins, Off when it is removed. To prevent the jumper from being lost when removed, it can be “parked” on one pin as show:



The jumper is in OFF / parked / removed position.



The jumper is in ON / linked position.

Power Supply

4 D-cell Alkaline batteries power the BX-7 with a life expectancy of over 3 years.

The BX-7 can detect if its batteries are low. Low battery detection operates at a threshold of 4.4V +/- 10% where the BX-7 has enough power to typically operate for 1 month before complete exhaustion. The siren low battery signal will be enunciated by five beeps when arming / disarming.

● Siren Memory Clear

The siren can be reset and cleared of memory contents by remove the batteries, then wait for 1 minute remove the link across the jumper JP6 and re-insert the batteries. The siren will produce a short confirmation tone. The link should then be re-inserted otherwise the siren ID code learned will be reset every time when the siren has a power-up sequence.

● Siren Audible Performance

The siren produces a minimum of 104 dBA sound pressure at 1 meter on axis. It is programmable via two jumpers (JP3 and JP4) for four different siren durations:

- 1) 3 min.
- 2) 5 min.
- 3) 10 min.
- 4) 1 second (test)

- The fourth position (1 second) is used for testing during installation.
- The siren is silenced when either the programmed siren duration expires or the Control panel turns off the siren.
- In case of low battery condition, BX-7 gives an intermittent alarm sound instead of continues alarm sound during the programmed siren duration.

● Strobe Light

The strobe light will flash to indicate various system status and can be programmed by Jumper #2 as shown in jumper position table. It will be turned off either when the programmed siren duration has expired or the panel resets the system.

● Jamming Detection

The BX-7 has its own jamming detection, which is selectable by Jumper #7. With the Jumper #7 removed, jamming is detected when radio interference is present for more than 30 seconds. It will activate the siren when you arm the system with its pre-programmed siren duration.

● Tamper Alarm

If the siren detects a tamper condition it will activate the siren for the programmed alarm period. If the tamper condition persists, the siren will sound a series of five pips either every time the system is armed or when the tamper is enabled, to indicate a fault. Tamper feature can be enabled/disabled from the control unit by selecting "**Device +/-**" menu, then "**Program Siren**" menu, and then, choose "**Siren Tamp ON**" or "**Siren Tamp OFF**" and press OK.

● Confirm Programming

The siren can be programmed to produce additional confirmation beeps to tell you when the system is armed and disarmed from outside the premises. One beep for armed or home armed, two beeps for disarmed.

The setting up procedure can be done from the control panel under "**Device +/-**" menu then "**Program Siren**" menu and select "**Confirm On**" or "**Confirm Off**"

- Disable the Siren Confirmation by selecting "**Confirmation Off**" and press "**OK**".

- Enable the Siren Confirmation by selecting “**Confirmation On**” and press “**OK**”.

● Previous Alarm Warning

If there has been an alarm while you were away, the BX-7 will sound and flash for 3 seconds when the system has been disarmed.

WARNING: If the siren is activated for 3 seconds when you disarmed your system, this suggests that there could be an intruder still in your premises.

● Audio & Visual Status Indication

In order to easily recognize various statuses, the BX-7 uses the following methods as indications for the user:

| | Siren Audio | Strobe light indication |
|----------------------|-------------|-----------------------------------|
| Arm/Home | 1 beep * | 3 LED flashes at once |
| Disarm | 2 beep * | Sequentially flashes for 1 cycle |
| Arm (Low Battery) | 5 beeps | 3 LED flashes for three times |
| Disarm (Low Battery) | 5 beeps | Sequentially flashes for 2 cycles |
| Arm (Tamper) | 5 beeps | 3 LED flashes for three times |
| Disarm (Tamper) | 2 beeps * | 3 LED flashes for three times |

<NOTE>

- ☞ For the one with * mark, this means the Siren Audio indication will be affected by the Confirmation ON / OFF. When setting Confirmation to OFF, the confirmation sound will not be available.

Getting Started

To insert the batteries:

Step 1: Release the screw at the bottom of BX-7 and pull the outer case out carefully.

Step 2: The battery compartment is a large box in the BX-7 with a lid secured with 4 screws.

Step 3: Remove the four screws and take off the compartment lid.

Step 4: Insert the D cell alkaline batteries provided into the battery compartment, taking care to put the batteries in the right way around.

Step 5: The BX-7 will give beeps and flashes when the last battery is inserted.

Step 6: **Replace the battery compartment lid with the four screws taking care not to over tighten**

Programming BX-7

Note: Remember to learn in at least one other device into the system before BX-7 can be added

Step 1. Locate the jumper set.

Step 2. Lift off Jumper# 1 and park it. The siren will beep and flash. The siren is now in learning mode.

Step 3. Lift off jumper #5 and park it. This must be left in the “**OFF**” position permanently. Unless you are using the BX-7 as part of the **CTC-800 Stand Alone Wireless System**.

Step 4. Program the Control Unit by selecting “**Device +/- menu**”, then “**Program Siren**” menu, and then “**Learn Siren**”.

Step 5. Press “**OK**”, and the Control unit will give a long beep to confirm followed by the siren’s response of a beep and a flash.

- Step 6. Replace jumper #1 to the **"ON"** position, the siren will beep and flash to confirm that the siren is now in Normal operation mode.
- Step 7. Disable the tamper switch by selecting **"Program Siren"** menu on the control unit, then **"Siren Tamp OFF"** and press **"OK"**.
- Step 8. Select **"Confirm ON"** or **"Confirm OFF"** under the **"Program Siren"** menu on the control unit, and press **"OK"**. The siren will beep to confirm.
- Step 9. Set jumper 3 & 4 for your desired alarm period.

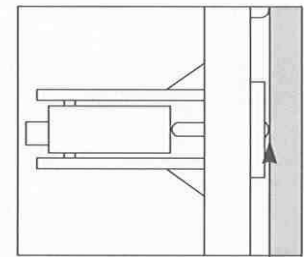
<NOTE>

** Once the tamper protection is disabled, the siren will automatically revert to Tamp ON after about an hour if you forget to switch it back on again manually by selecting **"Siren Tamp ON"**.

Installing BX-7

The tamper switch plunger protrudes through the back of the unit, so that if the siren is pulled off from the wall, the alarm will be activated. Ensure it is fully depressed when the siren is mounted. If there is a gap, pack with a suitable spacing material.

- Step 1. Find the location where BX-7 is to be mounted.
- Step 2. Using the large screws and wall plugs provided, mount on wall through the 4 x mounting holes.
- Step 3. Fix the siren cover with the securing screw.
- Step 4. Enable tamper switch by selecting the **"Device +/-"** menu, then, **"Program Siren"** menu on the Control Unit.
- Step 5. Test by arming and disarming with the Control Unit. If 5 short beeps performed while arming, then, the tamper is not correctly set.
The installation is now completed.



Tamper switch plunger must be pressed in fully by wall surface

Appendix

BX-7 can also be used without a Main control panel as a "Stand Alone Wireless System"

Make sure that Jumper#5 is in linked position for Stand-alone operation.

Programming (Stand Alone Wireless System):

- Step 1. Locate the jumper set.
- Step 2. Lift off Jumper# 1 and park it. The siren will beep and flash. It is now in learning mode.
- Step 3. Learn-in a Remote Controller by pressing the Arm Button until the Siren confirms, also learn in a PIR, Door/Window contact, Remote keypad **etc**:
- Step 4. Replace Jumper# 1 to the linked position, the Siren will confirm with a beep and a flash as it exits learn mode
- Step 5. Disable the system tamper by pressing and holding the Home and Arm buttons simultaneously until the siren confirms with a beep (approx 5 seconds).
- Step 6. Set jumper 3 & 4 for your desired alarm length period.